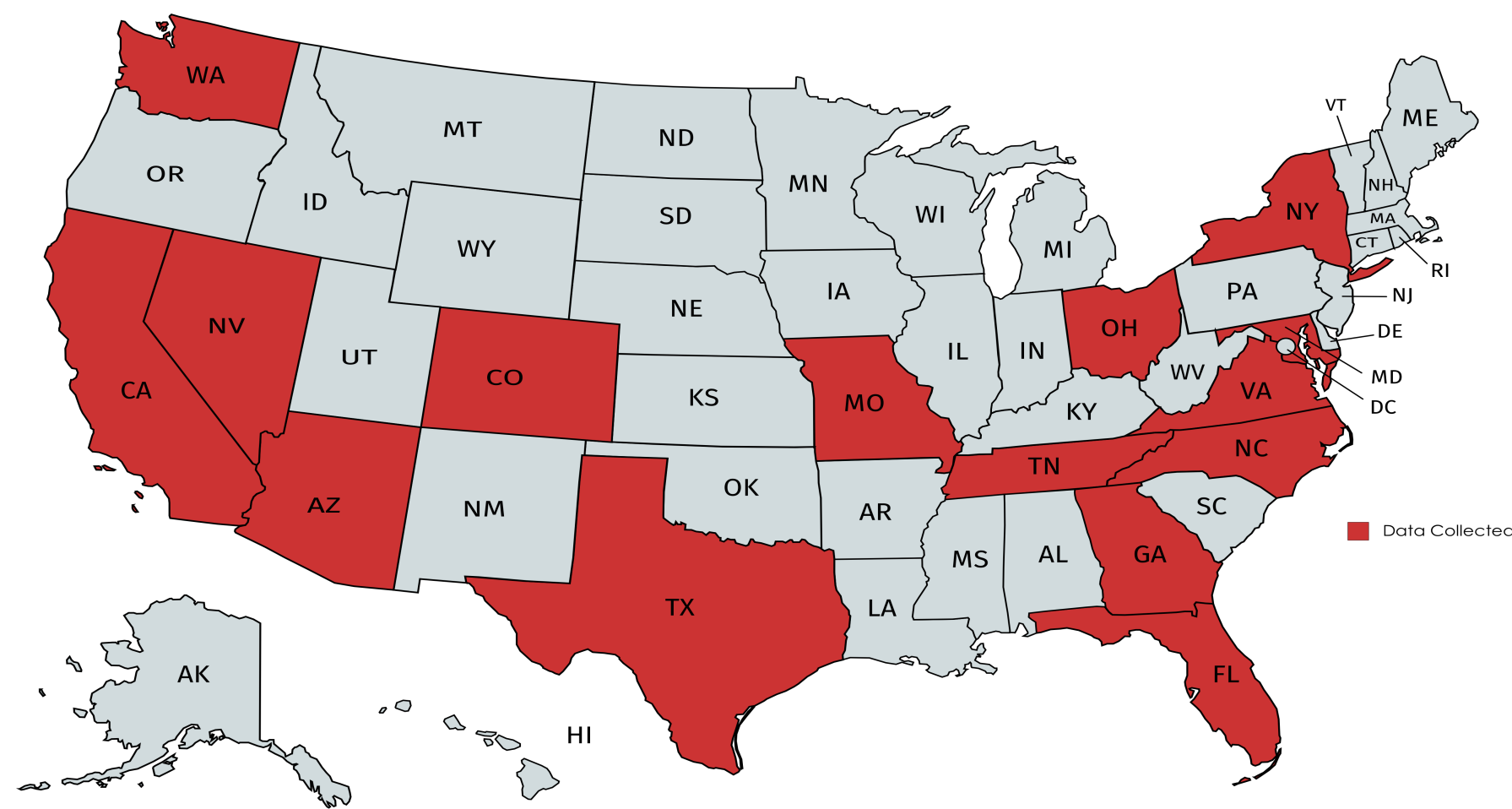
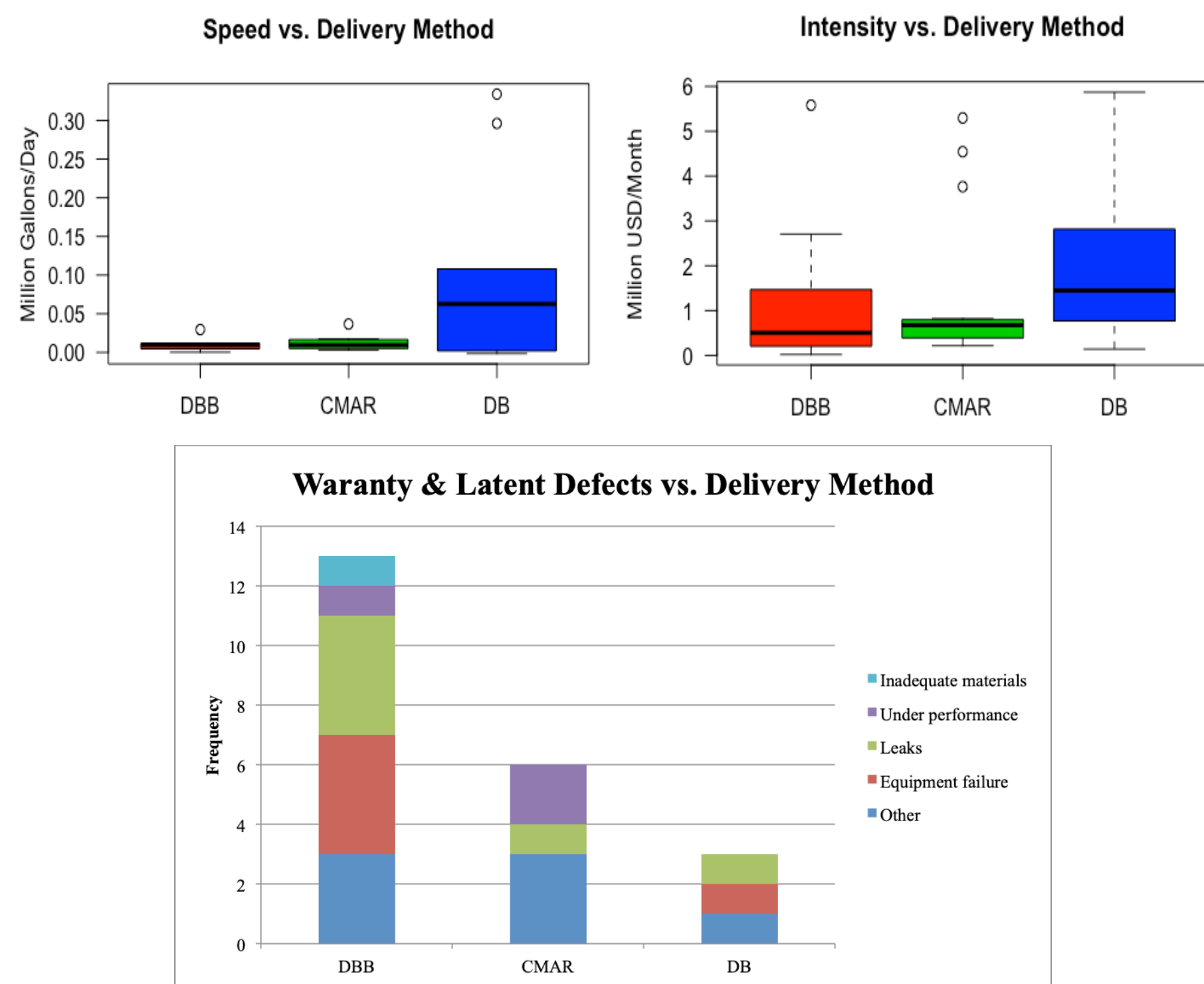


Jeffrey Feghaly, Mounir El Asmar, Ph.D., and Samuel Ariaratnam, Ph.D., P.E.
School of Sustainable Engineering and the Built Environment, Arizona State University, Tempe, AZ
jfeghaly@asu.edu, asmar@asu.edu, and ariaratnam@asu.edu

Phase 1



Phase 2



Research Phases

1

Reviewing the Literature & Survey Development

- Reviewed over 75 academic and industry publications for APDM delivery across all industries
 - Administered a national data collection survey and collected responses from 75 completed water infrastructure projects
- Resulted in the formation of a Journal Paper and a Conference Paper

2

Evaluating the Performance Impact of APDM

- APDM statistically outperforming DBB in project speed and intensity
 - APDM outperforming DBB in project quality
 - No statistical differences between APDM and DBB in terms of project cost
- Resulted in the formation of a Journal Paper

3

Developing a Decision-Support Tool: EXPRSS-TP

- Developed the first web-based project delivery decision-support tool for the water industry
 - Tested and validated by an industry panel of over 20 industry participants
 - EXPRSS-TP will be used by numerous utilities across the United States
- Resulted in the formation of a Journal Paper

4

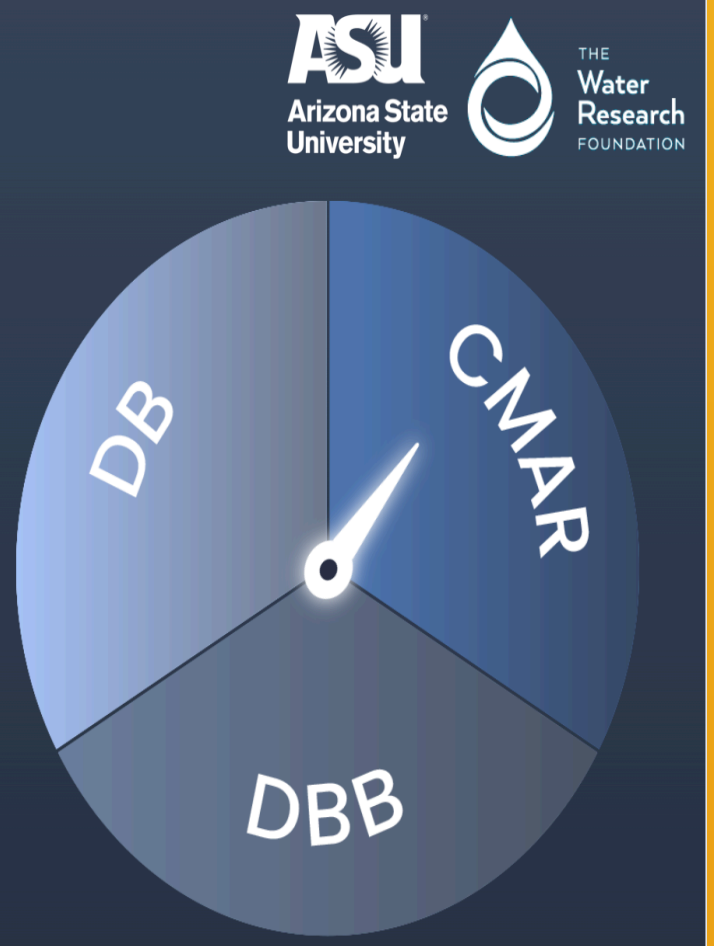
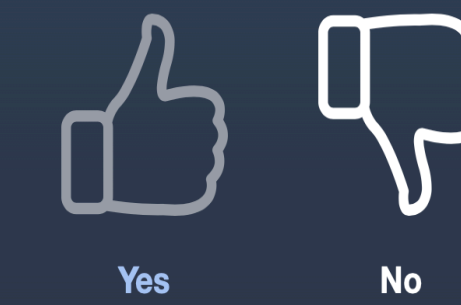
Identifying Effective DB Project Admin. Practices

- Interviewed about 10 water utilities experienced in DB project delivery across the United States
 - Identified the most effective practices under nine DB specific categories
- Resulted in the formation of a Journal Paper and a Conference Paper

Phase 3

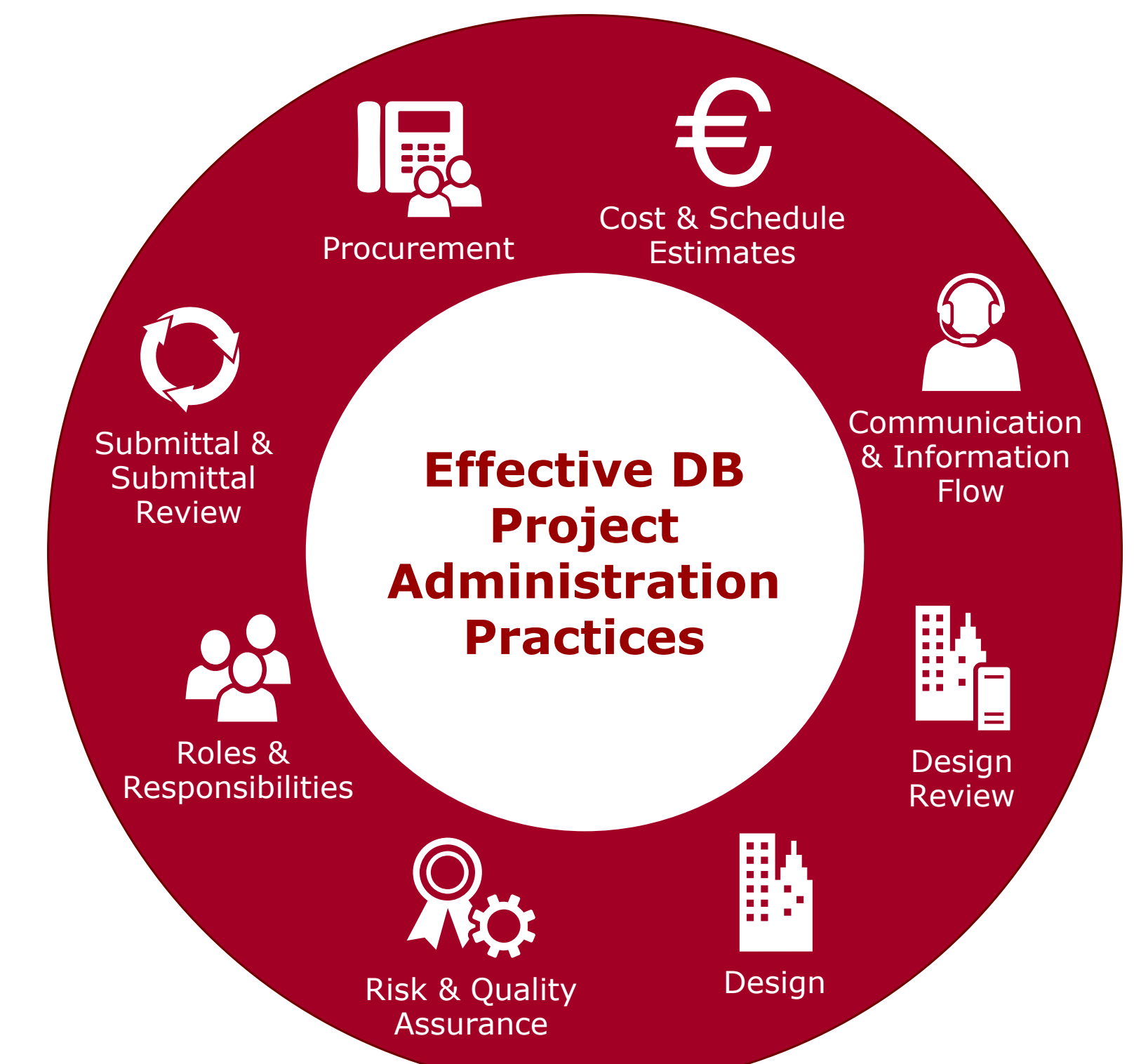
Owner Involvement, Experience, & Control

Does the utility have the resources to verify quality of design and construction?



Back Section Next

Phase 4



Acknowledgements

This work is funded by the Water Research Foundation (WRF). The authors would like to thank all industry collaborators for their time and support.

